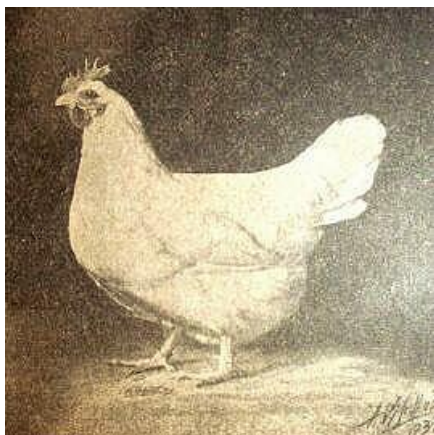




SOUTHERN AFRICAN SHOW POULTRY ORGANISATION BREED STANDARDS

LAMONA



ORIGIN:	United States
CLASSIFICATION:	Heavy breed: Soft feather
EGG COLOUR:	White
MASSES:	

LARGE FOWL

Cock:	3.6 kg
Cockerel:	3.2 kg
Hen:	3.0 kg
Pullet:	2.5 kg

BANTAMS

Male:	1.5 kg max
Female:	1.3 kg max

Lamonas were originated at the United States Government Experiment Station at Beltsville, Maryland. They are the result of crosses of Silver Grey Dorkings, White Plymouth Rocks and Single Comb White Leghorns. A heavy breed fowl laying a white shelled egg. Admitted to the USA Standard in 1933.

GENERAL CHARACTERISTICS

THE MALE

Body: Long, broad, deep. Keel bone: long. Back: long, broad, its entire length, straight, declining to tail. Saddle feathers: long and abundant. Tail: large, full, well-spread, carried at an angle of forty-five degrees above horizontal. Main tail is broad and overlapping. Coverts: abundant. Wings: large, well-folded against body, not drooping. Primaries and secondaries: broad and overlapping in natural order when wing is folded. Breast: broad, deep, full, well-rounded and carried well forward.

- Head:** Moderately large. Comb: single, moderately large, straight and upright, evenly serrated, having five well defined points, the front and rear points shorter than the others. Beak: medium length, stout and well-curved. Face: surface smooth, skin fine and soft in texture. Eyes: full, prominent. Wattles: moderately large, well-rounded. Ear-lobes: medium length in proportion to the wattles.
- Neck:** Medium length, arched. Hackle: full and abundant, flowing well over the shoulders.
- Legs & feet:** Legs set well apart and straight when viewed from front. Lower thighs: large, moderately short and meaty. Shanks: moderately short, stout, round in bone. Toes: four on each foot, moderately long and straight.

THE FEMALE

- Body:** Long, broad, deep. Fluff: moderately developed, smooth. Breast: broad, deep, well-rounded, carried well forward. Back: long, broad, straight, declining slightly to tail. Tail: well developed, carried at an angle of forty degrees above horizontal. Main tail feathers: broad and overlapping. Wings: large, well-folded against body. Primaries and secondaries: medium long, broad and overlapping in natural order.
- Head:** Medium size. Comb: single, moderately large, having five well-defined points. The front portion of the comb and the first point to stand erect, the remainder of the comb, drooping gradually to one side, free from folds or wrinkles. Beak: medium length, stout and well-curved. Face: surface smooth, skin fine and soft in texture. Eyes: full, prominent. Wattles: medium size, uniform, well-rounded. Ear-lobes: medium length and size in proportion to the wattles.
- Neck:** Medium length, arched, feathers full and abundant, flowing well over the shoulders.
- Legs & feet:** Legs set well apart, straight when viewed from front. Lower thighs: large, moderately short and meaty. Shanks: moderately short, round in bone. Toes: four on each foot, moderately long and straight.

COLOURS

WHITE

MALE AND FEMALE

- Comb, face, wattles and ear-lobes:** Bright red.
- Beak:** Yellow.
- Eyes:** Reddish bay.

Shanks and toes: Rich yellow.

**Plumage, web, fluff
and shafts of all
feathers, in all section:** White.

BANTAMS

The shape and colour descriptions are the same as for the large Lamonas.

SCALE OF POINTS	
Type and carriage	30
Head	20
Colour	15
Legs and feet	20
Condition	15
TOTAL	100